



pupil  
progress

## Effortless live progress tracking

Empowering you, your  
school and your students





# pupil progress

English 11 EN X1 | Full

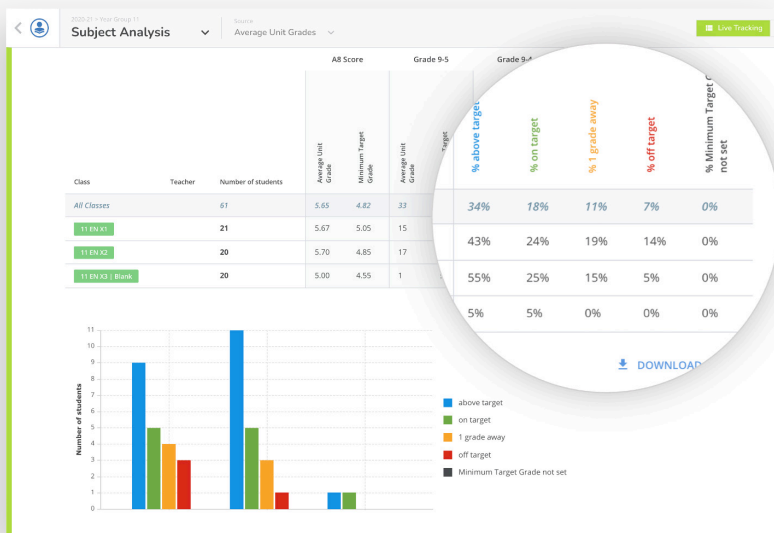
1 Communicating Information & Ideas

First name	Last name	Report	1 Communicating Information & Ideas	2	3	4	5	6	7	8	9	10	11	12	13	14	15	16	17	18	19	20	21	22	23	24	25	26	27	28	29	30	31	32	33	34	35	36	37	38	39	40	41	42	43	44	45	46	47	48	49	50	51	52	53	54	55	56	57	58	59	60	61	62	63	64	65	66	67	68	69	70	71	72	73	74	75	76	77	78	79	80	81	82	83	84	85	86	87	88	89	90	91	92	93	94	95	96	97	98	99	100
Tracy	Beaker	1	2	3	4	5	6	7	8	9	10	11	12	13	14	15	16	17	18	19	20	21	22	23	24	25	26	27	28	29	30	31	32	33	34	35	36	37	38	39	40	41	42	43	44	45	46	47	48	49	50	51	52	53	54	55	56	57	58	59	60	61	62	63	64	65	66	67	68	69	70	71	72	73	74	75	76	77	78	79	80	81	82	83	84	85	86	87	88	89	90	91	92	93	94	95	96	97	98	99	100	

## Tracking

Exam board specific trackers that calculate the grade exactly as the exam boards do.

No more spreadsheets



## Analysis

Data analysis of key subject, topic and skill areas - in real time.

Data points no longer required



GCSE in PE | Full Course  
Year Group 11 | Class 11X/Pe1 (P) EOTT

Tracy Beaker  
07.10.2021

Griffin Academy

Live Tracking

Minimum Target Grade	Overall Total Marks / 350	Current Grade	Scaled Average Unit Marks / 350	Average Unit Grade	Target Grid
6	176	4	196	4	Grade: 5, Marks away (Average Unit): 2

Unit	1: Fitness and Body Systems (36%)	2: Health and Performance (24%)	3: Practical (30%)	4: PEP (10%)
Grade	3	9	5	

Topic Summary	Total Marks
1.1: Applied anatomy & physiology / %	75
1.2: Movement Analysis / %	60
1.3: Physical training / %	55
1.4: Use of data / %	45
2.1: Health, fitness and wellbeing / %	80
2.2: Sport Psychology / %	55
2.3: Socio-cultural influences / %	45
2.4: Use of data / %	70

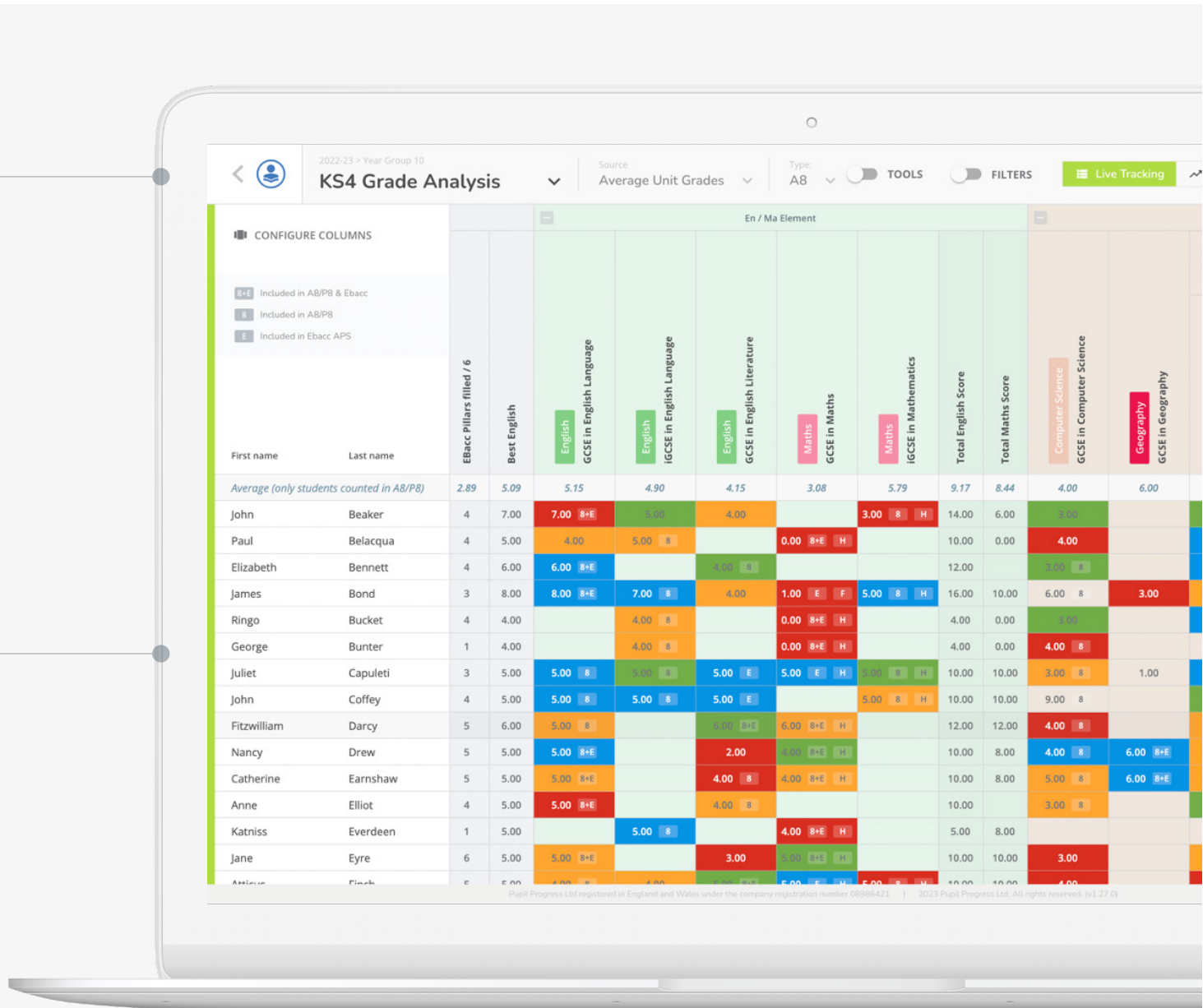
1: Fitness and Body Systems (36%)	Total	Grade
Raw Total Marks / 21		
Topic Test 1.0 - 3.0 / 90		
Question Level Analysis Average		
Past Paper Marks / 90	30	
1: Total Past Paper Marks / 90	30	
1: Total Scaled Marks / 126	42	
Average Total Marks / 90	30	
Current Unit Grade	3	
Average Total Marks / 90	30	
Current Unit Grade	3	

## Reports

Know exactly where your students are and what needs to be done to move them forward with detailed reports showing the breakdown of marks across the course.

Student buy-in and ownership

# Understand the human side of data and maximise impact.



## Whole School Overview

For the first time ever, senior leaders can see how each student is progressing in real time.

The live tracking ensures that the progress reported at department level can be seen in real time by the senior leadership team, killing the need for a data point.

Complete transparency from student to Trust Leaders

# For Teachers

Imagine removing all the grey areas, extra time and stress around data entry, grade predictions and progress reports.

Our easy-to-use trackers help you take control of your performance data at subject, topic and skill level, giving you clarity and confidence when it comes to informing your curriculum strategy, lesson planning and teaching.



## Identify the Gaps

Clearly see where students are underperforming and what areas of the curriculum would be best to focus on.

Add key improvement aims to your trackers enabling you to:

- shape targets
- inform lesson plans
- track performance



## No More Spreadsheets

Enter raw marks on pre-built trackers that automatically calculate student grades, giving you instant analysis ready to inform your next lesson, parents evening or report.

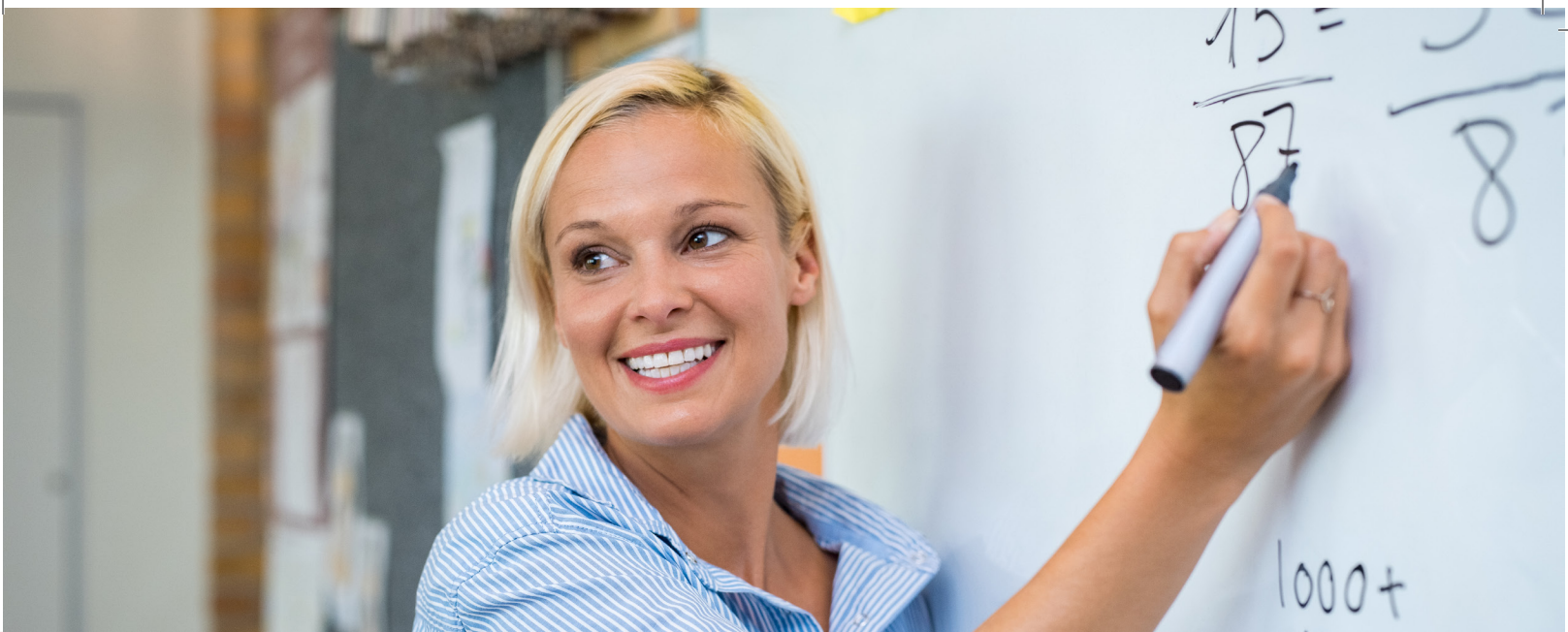


## Motivate Your Students

Reports show your students where they are and what they need to work on, empowering them to have ownership over their progress, and help you deliver greater outcomes.







## For Subject and Faculty Leaders

---

When your teachers are using Pupil Progress, you'll always be in control of that data since our pre-built trackers accurately calculate working-at grades, and generate instant analysis through live tracking.

There'll be no surprises when it comes to exam time, a more effective approach to lesson planning and curriculum design, and up-to-date informed reports.



### **Plan Ahead for Impactful Curriculum Delivery**

Instantly see the progress your students are making. Spot trends in performance on all skill and topic areas to inform your decision about next steps to take. This empowers your teachers to be in control of their students' progress every step of the way too.



### **Remain in Control of All Outcomes**

Performance measures are instantly calculated, allowing for rapid response to areas of underperformance and helping you to use your curriculum time more efficiently. You'll save time and reduce anxiety, creating space to be more strategic and focused on department progress.



### **Have Confidence to Build Action from Your Data**

Our system is exam board specific. It breaks the course down into units and marks, which means everyone can see the raw underlying data that has informed your students' grades. Clarity and trust increase, enabling meaningful conversations and actionable developments.

# For Headteachers and Deputy Headteachers

---

When your entire school is using our grade trackers, you can be confident your teachers are making decisions based on meaningful data.

An accurate and up-to-date view of your whole school gives you the ability to instantly pull reports on any individual student, for a single department, a group of departments, or at whole school level.



## Identify Gaps

Know the teachers and departments that need support. Report on progress quickly and easily, from the senior leadership team through to governors.



## Improve Performance

Build on the confidence that comes with reliable data to develop well-informed strategic plans, create buy-in more easily and empower across the board to drive impact and change.



## Deliver Accuracy

Be in complete control of your school's performance data and easily identify where the improvements and successes lie. With the ability to instantly pull reports on individual students, departments and whole year groups, the up-to-date reports allow all stakeholders to view and understand the raw marks informing your headline figures.







## For Trust Leaders

With every school using Pupil Progress tracking, you will have complete confidence in the trust's strategic direction. Support your schools with a consistent approach to data, with built-in flexibility for each context.

Analyse accurate data without the time-restrictive, admin-heavy operations to pull your data together.



### **Work with Data You Trust**

Support your staff with effective tracking, giving you the highest levels of confidence in the accuracy of your schools' reported grades. Make strategic decisions ensuring that time, effort, and resources are spent across the trust in the areas that will have the highest impact.



### **Flexible, Centralised Tracking**

Support your schools with bespoke question-level analysis. See the raw data and assessments underpinning grade decisions by teachers to pinpoint what is working well and which areas require support.



### **Provide Earlier Intervention**

Why rely on out-of-date data, when you have the live picture at your fingertips? Make strategic decisions without delay to maximise the attainment of all your students.

# PiXL WAVES

powered by



pupil  
progress

## Exam board specific tracking for English and Maths For PiXL Member Schools

Upgrade your educational journey today. **PiXL Waves powered by Pupil Progress** is a collaboration designed to empower you with advanced tools and real-time insights to drive student success at your school. If you are a PiXL member school, maximise your membership with exam board specific tracking for English and Maths through the Pupil Progress platform.



### All English and Maths Courses

Exam-board specific tracking pre-loaded with past papers.



### Seamless Integration

PiXL Waves data taken directly from your trackers, so no duplication or tedious uploading.



### Real-Time Insights

Compare your real-time attainment with national formative data throughout the year.

Sign up for PiXL Waves today and unlock student potential through data-driven insights and personalised teaching.



Or let's chat:

 @PupilProgressUK

   Pupil Progress

Tel: 01273 257 133

[pupilprogress.com](http://pupilprogress.com)